

Massachusetts Department
of Public Health



MDPH Tuesday Infectious Disease Webinar Series

“Tools for Local Boards of Health”

Hillary Johnson, MHS

Senior Epidemiology Advisor to Local Health, Division of Epidemiology

Scott Troppy, MPH, PMP

Senior Epidemiologist – MAVEN User Management & Data Visualization Lead

Petra Schubert, MPH

Emerging Infections Coordinator, Division of Epidemiology

Julie Coco, MPH

Internship Program and Training Coordinator, Division of Epidemiology

Kate Hamdan, MPH

Surveillance Epidemiologist, MAVEN Training Team Lead

Lionel White, MSIT

Senior Surveillance Research Analyst, MAVEN Training Team

April 14, 2026



Introduction to Alpha-gal Syndrome Case Investigations

April 14, 2026

Jessica Butler, DrPH, MPH
CSTE Applied Epidemiology Fellow



April 14, 2026

- **DPH Updates:**
 - **Seasonal RSV Infant Vaccination extended to April 30, 2026**
 - **Adult State-Supplied Vaccine Availability Table Updated**
 - **Recording Available: 6th Annual Garvey Public Health Lecture (TB) March 30, 2026**
 - **Measles Epi Update**
 - **Preparing for Summer 2026**
- **Featured Presentation: Introduction to Alpha-gal Syndrome Case Investigations**
 - **Jessica Butler, DrPH, MPH, CSTE Applied Epidemiology Fellow**

Imagine just being here with the love of your life.



dj

Did a Tick write this tweet?

Infectious Disease Tools for LBOH Webinar Schedule!

2026 Upcoming Schedule!

All Registrations:	http://tinyurl.com/MAVEN-Webinars
2 nd Tues 4/14/26	Alpha-Gal Syndrome Investigations
4 th Tues 4/28/26	4 th Tuesday Office Hours
2 nd Tues 5/12/26	Tuberculosis Contact Investigations
4 th Tues	<i>No May Office Hours</i>
2 nd Tues 6/09/26	Water & Animal Exposure Investigations for Enteric Diseases
4 th Tues 6/23/26	4 th Tuesday Office Hours
2 nd Tues 7/14/26	Group A Strep Investigations
4 th Tues 7/28/26	4 th Tuesday Office Hours

WEBINAR REGISTRATION PAGE:

<http://tinyurl.com/MAVEN-Webinars>

- You help us identify topics, needs, & content!
- Be sure to send ideas, requests, and questions to Hillary and Scott!

MAVEN Help has Guidance Documents and Previous Webinars:

<http://www.maven-help.maventrainingsite.com/toc.html>



You can always contact mavenhelp@mass.gov or The MDPH Epi Program at 617-983-6800 with specific questions.

**Join us for our next Office Hours Session
Tuesday, April 28, 2026 @11:00!**

Updates – A quick recap for April 14, 2026

March 10, 2026:

DPH Updates:

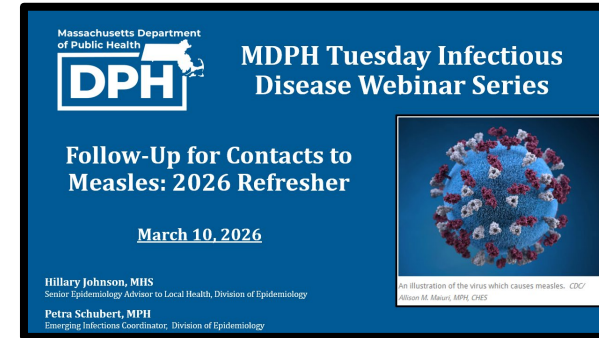
- MAVEN Updates
- Measles Epi Update
- Updated 2024 Viral Hepatitis Surveillance Report Available!

Featured Presentations: Case Investigation Basics 2026 & Measles Contacts Follow-Up Refresher

- **Hillary Johnson, MHS**, Senior Epidemiology Advisor to Local Health, Division of Epidemiology
- **Petra Schubert, MPH**, Emerging Infections Coordinator, Division of Epidemiology



[PDF Slides](#), [Recording](#)



[PDF Slides](#), [Recording](#)



Always Remember you can see recent webinar recordings and slides in MAVEN Help.

Bookmark the URLs!

MAVEN Help:

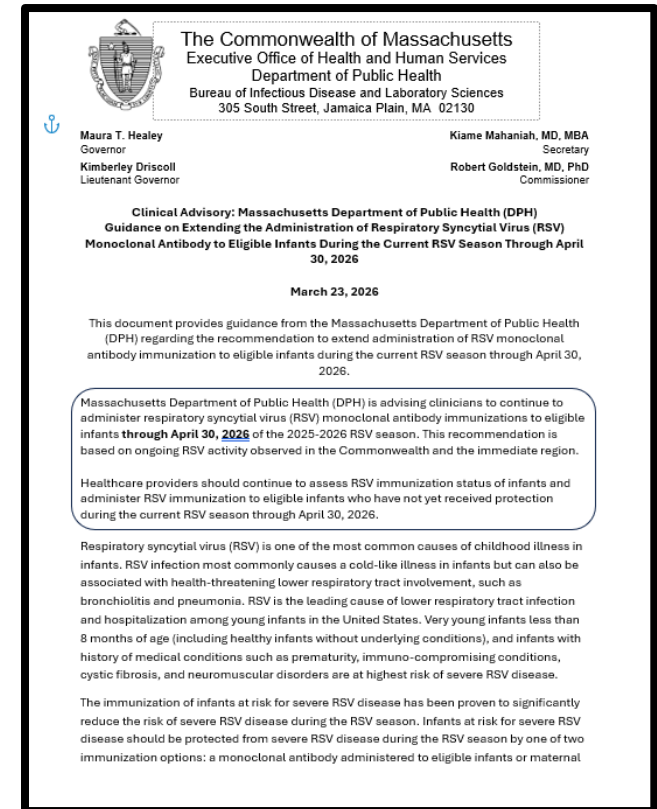
<http://www.maven-help.maventrainingsite.com/toc.html>

Register for Future 2026 Webinars and Office Hours:

<http://tinyurl.com/MAVEN-Webinars>

RSV Season Extension

- **DPH advises clinicians to continue to administer respiratory syncytial virus (RSV) monoclonal antibody immunizations to eligible infants through April 30, 2026 of the 2025-2026 RSV season.**
 - This recommendation is based on ongoing RSV activity observed in the Commonwealth and the immediate region.
 - [March 23, 2026 RSV Clinical Advisory](#) outlines this guidance.
 - State-supplied RSV monoclonal antibody products will continue to be orderable via the MIIS through the end of April to align with the aforementioned clinical guidance.



Adult Vaccine Availability Table Updated

- The 2026 [Adult Availability Table](#) has been updated to further open the use of state-supplied vaccines for enrolled public provider sites seeing uninsured and underinsured adult patients.
- Effective April 1, 2026, public provider may administer state-supplied HPV, Men-B, PCV20, RSV, and Zoster vaccine to uninsured and underinsured adults (19+ years) seen at their practice.
- There has been **no change in state-supplied vaccine availability for private provider sites**, as private providers are still not allowed to administer state-supplied vaccine to adult patients.

Massachusetts Department of Public Health (MDPH)
Immunization Division

Adult Vaccine Availability Table
– Effective April 2026 –

Eligibility:

- The Vaccine Program provides a limited supply of vaccines for uninsured and underinsured¹ adults seen in public sector sites.² **Employees of public sector sites are not eligible for state-supplied vaccine.**
- The Vaccine Program **does not** provide vaccines for adults seen at private provider sites. Availability of vaccines may change during an outbreak.
- Sites with billing capacity should purchase vaccine and seek reimbursement from health insurers.

Vaccine	Adults Eligible for State-Supplied Vaccine
COVID-19	• Only for uninsured or underinsured adults in recommended groups ³ seen at public sites. ²
Hep A	• Only for uninsured or underinsured adults in recommended groups ³ seen at public sites. ²
Hep B ⁴	• Only for uninsured or underinsured adults in recommended groups ³ seen at public sites. ² <small>Please Note: Employers covered by federal OSHA regulations are responsible for supplying hepatitis B vaccine to their employees. State-supplied vaccine is not available for this group.</small>
HPV ⁵	• Only for uninsured or underinsured adults in recommended groups ³ seen at public sites. ²
Influenza	• Only for uninsured or underinsured adults in recommended groups ³ seen at public sites. ²
MenACWY ⁶	• Only for uninsured or underinsured adults in recommended groups ³ seen at public sites. ²
Meningococcal B (MenB)	• Only for uninsured or underinsured adults in recommended groups ³ seen at public sites. ²
MMR ⁴	• Only for uninsured or underinsured adults in recommended groups ³ seen at public sites. ²
Mpox	• Only for uninsured or underinsured adults in recommended groups ³ seen at public sites. ²
Pneumococcal conjugate (PCV20)	• Only for uninsured or underinsured adults in recommended groups ³ seen at public sites. ²
Pneumococcal Polysaccharide (PPSV23)	• Only for uninsured or underinsured adults in recommended groups ³ seen at public sites. ²
Polio	• Only for uninsured or underinsured adults in recommended groups ³ seen at public sites. ²
RSV	• Only for uninsured or underinsured adults in recommended groups ³ seen at public sites. ²

World TB Day Commemorations



In honor of Dr. Thomas Q. Garvey, beloved father, husband, and son, and to celebrate his commitment to advocacy, public health, education, and TB elimination.

6th Annual Garvey Public Health Lecture

March 30, 2026

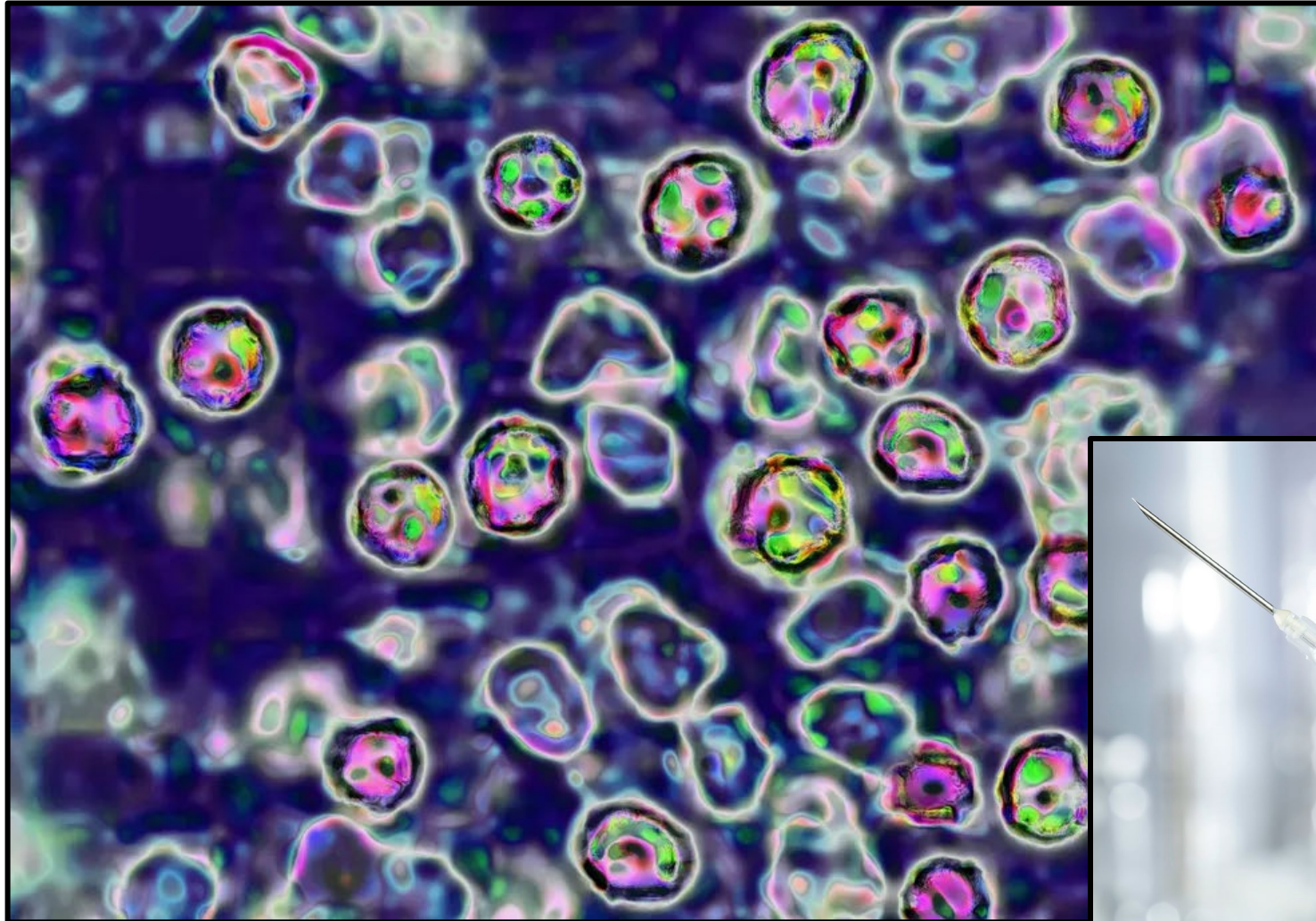
Recording and Slides Available!

Release of 2025 MA TB Data
and keynote address by Dr. Sarah Fortune:

“Defying conventional wisdom: progress and challenges in the science of TB eradication”

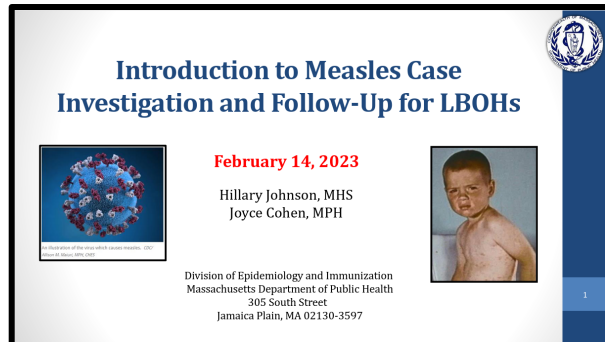
[Webinar Recording and Slides](#)

Measles Updates

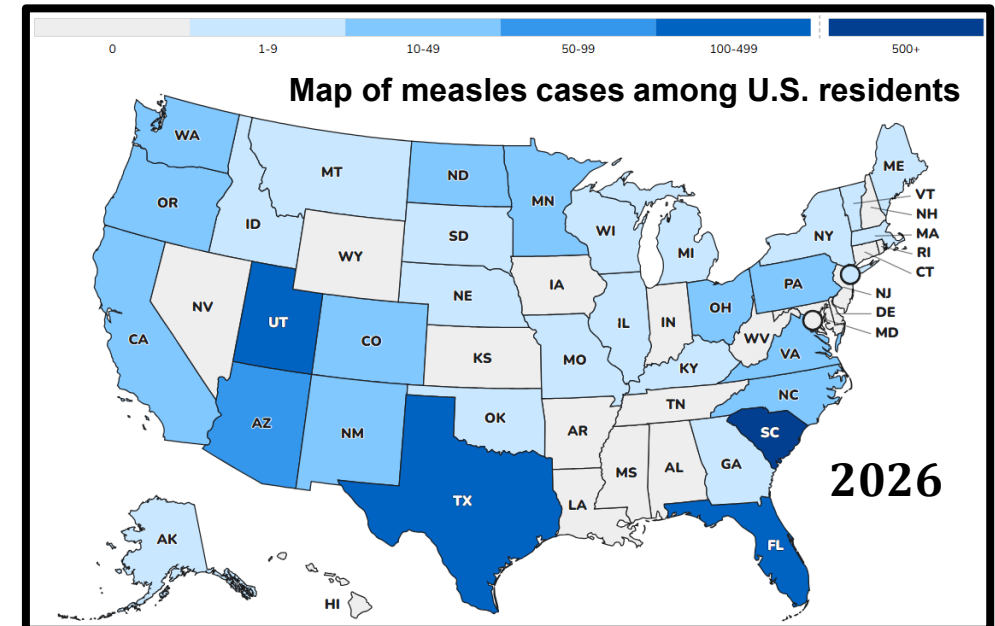
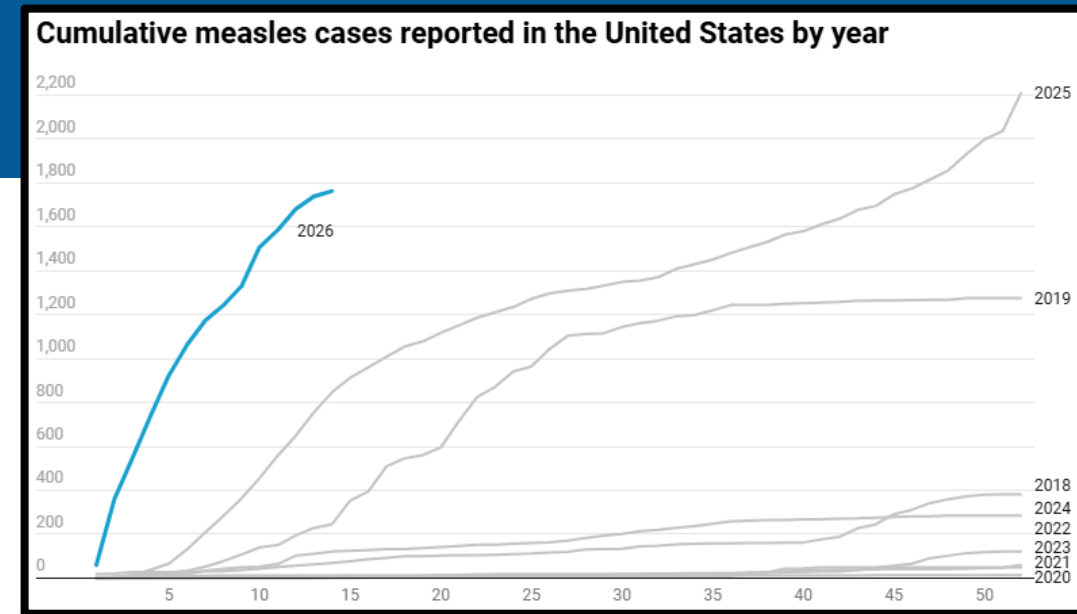


U.S. Measles Cases, 2026

- As of April 9, 2026, **1,714** confirmed measles cases were reported by 33 US jurisdictions in 2026.
 - Including **2 cases in Massachusetts**.
- There have been 17 new outbreaks (defined as 3+ related cases) reported in 2026; **94% of confirmed cases are outbreak-associated**.
- 92% of 2026 cases were unvaccinated or unknown. There have been no deaths.
- Measles training on MAVEN Help:



[Slides](#)
[Recording](#)



Data as of 4/9/2026. Sources: [CDC | Measles Cases and Outbreaks](#); [Johns Hopkins University | US Measles Tracker](#)

First Measles Cases in Massachusetts, 2026

Press Release from 2/27/2026 announces two confirmed cases of measles in Massachusetts residents:

- The first case was reported in a school-aged Massachusetts resident who was exposed and diagnosed out of state and remained out of state during the infectious period. **There are no known exposures to others in Massachusetts.**
- The second case was diagnosed in an adult who lives in Greater Boston. The individual returned from international travel and had an uncertain vaccination history. During their infectious period, the individual visited several locations where exposures to others likely occurred. **State and local public health officials worked with these locations to identify and notify those who were potentially exposed.**

As of 4/13/26, no additional cases were identified in Massachusetts.

PRESS RELEASE

State public health officials announce first two confirmed measles cases in Massachusetts this year

Residents are reminded of the importance of MMR vaccine in preventing measles

FOR IMMEDIATE RELEASE: 2/27/2026 Department of Public Health

MEDIA CONTACT
Ann Scales, Director of Media Relations
Phone (617) 624-5006
Online ann.scales@mass.gov

BOSTON — The Massachusetts Department of Public Health (DPH) confirmed today that two cases of measles have been diagnosed in Massachusetts residents.

- The first case was reported in a school-aged Massachusetts resident who was exposed and diagnosed out of state and remains out of state during the infectious period. There are no known exposures to others in Massachusetts.
- The second case was diagnosed in an adult who lives in Greater Boston. The individual recently returned from international travel and had an uncertain vaccination history. During their infectious period, the individual visited several locations where exposures to others likely occurred. State and local public health officials are working with these locations to identify and notify those who were potentially exposed.

These two cases of measles in Massachusetts have occurred in the context of a large national outbreak of measles and a very large international outbreak. Although there is no evidence of the spread of measles within Massachusetts at this time, additional cases could occur. [View a 10-year table of vaccine-preventable disease reports in Massachusetts.](#)

"Our first two measles cases in 2026 demonstrate the impact that the measles outbreaks, nationally and internationally, can have here at home. Fortunately, thanks to high vaccination rates, the risk to most Massachusetts residents remains low," said Public Health Commissioner **Robbie Goldstein, MD, PhD**. "Measles is the most contagious respiratory virus and can cause life-threatening illness. These cases are a reminder of the need for health care providers and local health departments to remain vigilant for cases so that appropriate public health measures can be rapidly employed to prevent spread in the state. This is also a reminder that getting vaccinated is the best way for people to protect themselves from this disease."

Early symptoms of measles occur 10 days to 2 weeks after exposure and may resemble a cold (cough, runny nose, and red eyes), usually with fever. A rash occurs 2-4 days after the initial symptoms develop. The rash usually appears first on the head and then moves downward. The rash typically lasts a few days and then disappears in the same order. People with measles may be contagious up to four days before the rash appears and four days after the day the rash appears. Measles is a potentially serious illness, with complications occurring in approximately 30 percent of infected individuals, including immune suppression, pneumonia, diarrhea, and

[Mass.gov | First Two Measles Cases 2026 Press Release](#)



Summer 2026



Preparing for Summer 2026

- Get ready for lots of visitors from US and Abroad!
 - We anticipate routine updates and reminders – let us know your questions as we near these events.
 - It is a great time to review your local policies around texting, phone apps, and other tools. (WhatsApp)
 - Reminder to utilize translation services for casework (for your residents and also visitors staying in your jurisdictions).
 - **OLRH Special Topic Webinar: FIFA World Cup: Tuesday, April 14, at 3 p.m.** Your regular Tuesday Zoom link should work.



[FIFA Schedule](#)

